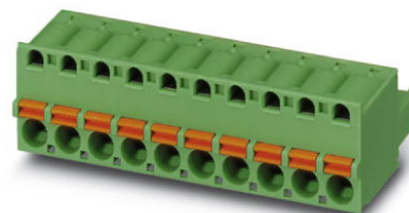


FKC 2,5/16-ST-5,08

Order No.: 1873197

The figure shows a 10-position version of the product

<http://eshop.phoenixcontact.de/phoenix/treeViewClick.do?UID=1873197>

Plug component, nominal current: 12 A, rated voltage: 250 V, pitch:
5.08 mm, no. of positions: 16, type of connection: Spring-cage
connection

Commercial data

| | |
|--------------------------|--------------------|
| EAN | 4017918142582 |
| Pack | 50 Pcs. |
| Customs tariff | 85366990 |
| Weight/Piece | 0.029194 KG |
| Catalog page information | Page 184 (CC-2007) |

Product notes

WEEE/RoHS-compliant since:
01/01/2003



<http://www.download.phoenixcontact.com>
Please note that the data given here has been taken from the online catalog. For comprehensive information and data, please refer to the user documentation. The General Terms and Conditions of Use apply to Internet downloads.

Technical data

Dimensions / positions

| | |
|---------------------|---------|
| Pitch | 5.08 mm |
| Dimension a | 76.2 mm |
| Number of positions | 16 |

Technical data

| | |
|------------------------------------|---------------------|
| Insulating material group | I |
| Rated surge voltage (III/3) | 4 kV |
| Rated surge voltage (III/2) | 4 kV |
| Rated surge voltage (II/2) | 4 kV |
| Rated voltage (III/2) | 320 V |
| Rated voltage (II/2) | 630 V |
| Connection in acc. with standard | EN-VDE |
| Nominal current I_N | 12 A |
| Nominal voltage U_N | 250 V |
| Nominal cross section | 2.5 mm ² |
| Maximum load current | 12 A |
| Insulating material | PA |
| Inflammability class acc. to UL 94 | V0 |
| Internal cylindrical gage | A2 |
| Stripping length | 10 mm |

Connection data

| | |
|---|----------------------|
| Conductor cross section solid min. | 0.2 mm ² |
| Conductor cross section solid max. | 2.5 mm ² |
| Conductor cross section stranded min. | 0.2 mm ² |
| Conductor cross section stranded max. | 2.5 mm ² |
| Conductor cross section stranded, with ferrule without plastic sleeve min. | 0.25 mm ² |
| Conductor cross section stranded, with ferrule without plastic sleeve max. | 2.5 mm ² |
| Conductor cross section stranded, with ferrule with plastic sleeve min. | 0.25 mm ² |
| Conductor cross section stranded, with ferrule with plastic sleeve max. | 2.5 mm ² |
| Conductor cross section AWG/kcmil min. | 24 |
| Conductor cross section AWG/kcmil max | 12 |
| 2 conductors with same cross section, stranded, TWIN ferrules with plastic sleeve, min. | 0.5 mm ² |
| 2 conductors with same cross section, stranded, TWIN ferrules with plastic sleeve, max. | 1.5 mm ² |

Certificates / Approvals



CUL

| | |
|-----------------------|-------|
| Nominal voltage U_N | 300 V |
| Nominal current I_N | 10 A |
| AWG/kcmil | 26-12 |

UL

| | |
|-----------------------|----------------------------|
| Nominal voltage U_N | 300 V |
| Nominal current I_N | 10 A |
| AWG/kcmil | 26-12 |
| Certification | CB, CUL, GOST, UL, VDE-PZI |

Accessories

| Item | Designation | Description |
|------|-------------|-------------|
|------|-------------|-------------|

Assembly

| | | |
|---------|----------------|--|
| 1876880 | STZ 8-FKC-5,08 | Strain relief for snapping into the latching chambers of the plug components, 8-pos. |
| 1876877 | STZ 4-FKC-5,08 | Strain relief for snapping into the latching chambers of the plugs, 4-pos. |

Marking

| | | |
|---------|--------------------------|---|
| 1051993 | B-STIFT | Marker pen, for manual labeling of unprinted Zack strips, smear-proof and waterproof, line thickness 0.5 mm |
| 0804293 | SK 5,08/3,8:FORTL.ZAHLEN | Marker card, printed horizontally, self-adhesive, 12 identical decades marked 1-10, 11-20 etc. up to 91-(99)100, sufficient for 120 terminal blocks |
| 0805085 | SK 5,08/3,8:SO | Marker card, special printing, self-adhesive, labeled acc. to customer requirements, 12 identical marker strips per card, max. 25-position labeling per strip, color: white |
| 0805412 | SK 5,08/3,8:UNBEDRUCKT | Marker cards, unprinted, with pitch divisions, self-adhesive, 10-section marker strips, 12 strips per card, can be labeled with the M-PEN |

Plug/Adapter

| | | |
|---------|---------|---|
| 1734634 | CP-MSTB | Coding profile, is inserted into the slot on the plug or inverted header, red insulating material |
|---------|---------|---|

| | | |
|---------|-----------|---|
| 0201689 | MPS-IH BU | Insulating sleeve (blue), for MPS metal part to be ordered separately (0201744) |
| 0201702 | MPS-IH GN | Insulating sleeve (green), for MPS metal part to be ordered separately (0201744) |
| 0201676 | MPS-IH RD | Insulating sleeve (red), for MPS metal part to be ordered separately (0201744) |
| 0201663 | MPS-IH WH | Insulating sleeve (white), for MPS metal part to be ordered separately (0201744) |
| 0201744 | MPS-MT | Test plug, consisting of: Metal part for 2.3 mm diameter socket hole |
| 0201647 | RPS | Reducing plug, for transition from 4 mm diameter test plug socket, insulation: gray |

Tools

| | | |
|---------|-------------|--|
| 1205053 | SZS 0,6X3,5 | Screwdriver, bladed, matches all screw terminal blocks up to 4.0 mm ² connection cross section, blade: 0.6 x 3.5 mm, without VDE approval |
|---------|-------------|--|

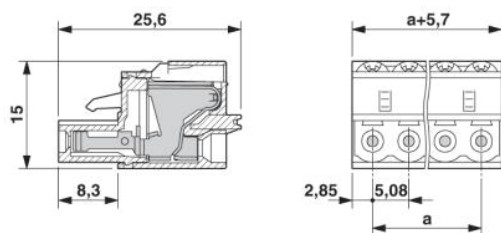
Additional products

| Item | Designation | Description |
|----------------|-----------------------|---|
| General | | |
| 1823985 | ICC 2,5/16-STZ-5,08 | Plug component, nominal current: 12 A, rated voltage: 250 V, pitch: 5.08 mm, no. of positions: 16, type of connection: Crimp connection |
| 1762509 | MDSTB 2,5/16-G1-5,08 | Header, nominal current: 10 A, rated voltage: 250 V, pitch: 5.08 mm, no. of positions: 16, mounting: Soldering |
| 1762648 | MDSTBV 2,5/16-G1-5,08 | Header, nominal current: 10 A, rated voltage: 250 V, pitch: 5.08 mm, no. of positions: 16, mounting: Soldering |
| 1770850 | MSTB 2,5/16-G-5,08-LA | Header, nominal current: 12 A, rated voltage: 250 V, pitch: 5.08 mm, no. of positions: 16, mounting: Soldering |
| 1788868 | MSTBVK 2,5/16-G-5,08 | Header, nominal current: 12 A, rated voltage: 320 V, pitch: 5.08 mm, no. of positions: 16, mounting: Mounting rail |
| 1788677 | MVSTBU 2,5/16-GB-5,08 | Header, nominal current: 12 A, rated voltage: 320 V, pitch: 5.08 mm, no. of positions: 16, mounting: Direct mounting |
| 1769609 | SMSTB 2,5/16-G-5,08 | Header, nominal current: 12 A, rated voltage: 250 V, pitch: 5.08 mm, no. of positions: 16, mounting: Soldering |
| 1767517 | SMSTBA 2,5/16-G-5,08 | Header, nominal current: 12 A, rated voltage: 250 V, pitch: 5.08 mm, no. of positions: 16, mounting: Soldering |
| 3002034 | UK 3-MSTB-5,08 | Modular terminal blocks with plug entry, cross section: 0.2 - 2.5 mm ² , AWG: 30 - 12, width: 5.1 mm, color: gray |
| 3002076 | UK 3-MVSTB-5,08 | Modular terminal blocks with plug entry, cross section: 0.2 - 2.5 mm ² , AWG: 26 - 12, width: 5.1 mm, color: gray |

| | | |
|---------|--------------------------|---|
| 3002102 | UK 3-MVSTB-5,08-LA 24RD | Modular terminal block with plug entry, nominal current: 12 A, rated voltage: 320 V, pitch: 5.08 mm, no. of positions: 1, mounting: mounting rail, with red light indicator, voltage light indicator: 24 V AC/DC, current light indicator: 3.3 mA |
| 3002063 | UK 3-MVSTB-5,08/EK | Modular terminal blocks with plug entry, cross section: 0.2-2.5 mm ² , AWG: 26-12, width: 5.1 mm, color: blue |
| 3002131 | UK 3D-MSTBV-5,08 | Modular terminal blocks with vertical plug entry, cross section: 0.2 - 2.5 mm, AWG: 30 - 12, width: 5.1 mm, color: gray |
| 3002144 | UK 3D-MSTBV-5,08-LA 24RD | Modular terminal block with vertical plug entry, color: Gray, with red light indicator, voltage light indicator: 24 V AC/DC, current light indicator: 3.3 mA |
| 3002173 | UK 3D-MSTBV-5,08/EK | Modular terminal blocks with plug entry, cross section: 0.2 - 2.5 mm ² , AWG: 30 - 12, width: 5.1 mm, color: blue |
| 2770888 | UKK 3-MSTB-5,08 | Modular terminal blocks with 2 horizontal plug entries, cross section: 0.2 - 2.5 mm, AWG: 30 - 12, width: 5.1 mm, color: gray |
| 1876615 | UKK 3-MSTB-5,08-PE | Ground terminal block, with 2 horizontal plug entries, nominal current: 12 A, rated voltage: 320 V, pitch: 5.08 mm, no. of positions: 1, mounting: mounting rail. |
| 2770846 | UKK 3-MSTBVH-5,08 | Modular terminal blocks with vertical and horizontal plug entry, cross section: 0.2 - 2.5 mm, AWG: 30 - 12, width: 5.1 mm, color: gray |
| 1788253 | UMSTBVK 2,5/16-G-5,08 | Header, nominal current: 12 A, rated voltage: 320 V, pitch: 5.08 mm, no. of positions: 16, mounting: Mounting rail |
| 1873016 | ZFKK 1,5-MSTBV-5,08 | Modular terminal blocks with plug entry, cross section: 0.2 - 1.5 mm ² , width: 5.1 mm, color: gray |

Drawings

Dimensioned drawing



Address

PHOENIX CONTACT GmbH & Co. KG
Flachsmarktstr. 8
32825 Blomberg, Germany
Phone +49 5235 3 00
Fax +49 5235 3 41200
<http://www.phoenixcontact.de>



© 2008 Phoenix Contact
Technical modifications reserved;